

# SSD/Maplewood- Richmond Heights



**October 2023**

Dear MRH Families,

It's hard to believe we've been in school six weeks already! As I am visiting learning spaces and walking the halls of our schools, I continue to see our students actively engaged in their learning. Whether it's our youngest learners working to learn the letters of his/her name or a more experienced learner writing a well researched essay, it's an absolute joy to observe their learning and growth. Our incredible teachers, related service providers, and paraprofessionals put their heart and soul into ensuring each

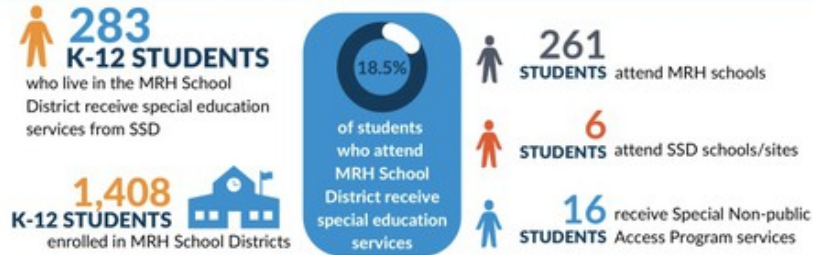
student is learning and growing. All MRH staff are committed to meeting the unique learning needs of all students. We welcome your support and collaboration as, together, we help students realize their full potential in life and learning.

In Partnership,  
*Emily*

Emily Kresyman Ed. S  
Maplewood Richmond Heights Director of Special Education

---

## Special Education Highlights



## SSD Services

SSD also provides a range of other services to students who live in the MRH School District, including:

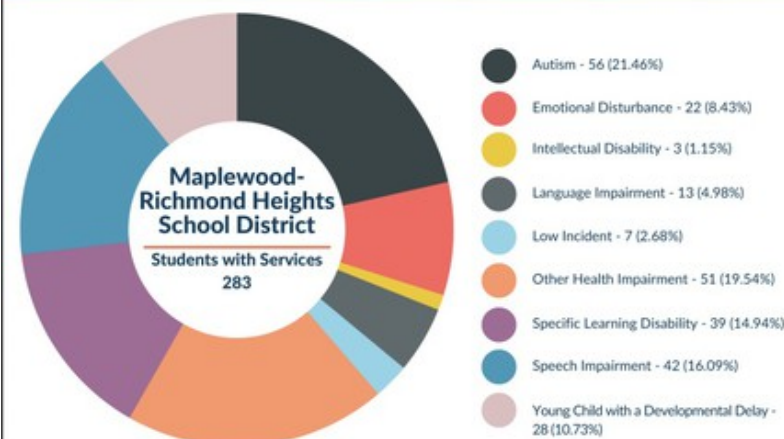


## Career Technical Education (CTE) Highlights



In all school districts on any given day, student counts may vary. For consistency, the information below is the student core data provided to the Missouri Department of Elementary and Secondary Education (DESE) for the Dec. 1, 2022, unduplicated child count, as well as information from SSD's Student Individualized Education Program (IEP) Management System on May 25, 2023.

## Students Served by SSD Who Attend MRH School District



## Definitions

**Autism** - A neurological and developmental disorder that affects how people interact with others, communicate, learn, and behave

**Emotional Disturbance** - An inability to learn that cannot be explained by intellectual, sensory, or health factors; an inability to build or maintain satisfactory interpersonal relationships with peers and teachers; inappropriate types of behavior or feelings under normal circumstances

**Intellectual Disability** - Significantly subaverage general intellectual functioning existing concurrently with deficits in adaptive behavior manifested during the developmental period that adversely affects a student's educational performance

**Language Impairment** - A communication disorder, such as stuttering, impaired articulation, a language impairment, or a voice impairment that adversely affects a child's educational performance

**Low Incident** - A disability that affects relatively few of the total number of students with disabilities who receive special education services

**Other Health Impairment** - Having limited strength, vitality, or alertness due to chronic or acute health problems (such as heart condition, tuberculosis, rheumatic fever, asthma, attention deficit disorder, epilepsy, diabetes, and others) that adversely affect a child's educational performance

**Specific Learning Disability** - The term used in federal legislation to refer to difficulty in certain areas of learning, rather than in all areas of learning

**Speech Impairment** - A communication disorder, such as stuttering, impaired articulation, language impairment, or a voice impairment, that adversely affects a child's educational performance

**Young Child with a Developmental Delay** - A child, ages 3 to 5, who is experiencing developmental delays, as measured by appropriate evaluation instruments and procedures, in one or more of the following areas: physical development, cognitive development, communication development, social or emotional development, or adaptive development; and who needs special education and related services

---

## This month in MRH

October 1st- Homecoming Parade 2-4pm  
October 10th- Community Conversations w/ MRH administrators  
October 10th- early release day  
October 18th- South Tech Preview night  
October 19th- MRH Board of Education Meeting  
Week of October 23rd- Parent/Teacher Conferences  
October 26th- [Great Pumpkin Glow](#)  
October 27th- No School - Professional Learning Day- Staff only

---







# south tech PREVIEW NIGHT



**OCT. 18**  
**wednesday**  
**5-7 PM**



12721 West Watson Road • St. Louis, MO 63127 • [www.southtechnical.org](http://www.southtechnical.org)



the **REAL** world  
is waiting for you at **SOUTH TECH**.

## PREVIEW NIGHT

Wednesday, October 18, 2023  
5 - 7 PM

**south  
TECH**  
HIGH SCHOOL

### our programs

**Automotive Collision Repair**  
**Automotive Technology**  
**CISCO Networking Academy**  
**Construction Innovations**  
• Carpentry, Construction Trades,  
HVAC, Electrical Trades, & Floor Laying  
**Cosmetology**  
**Culinary Arts**  
**Dental Sciences**  
**Design & Entrepreneurship**  
**Early Childhood Education**

**Electronics & Robotics Engineering**  
**Firefighting & EMT**  
**Graphic Design**  
**Health Sciences**  
**Law Enforcement**  
**Pharmacy Sciences**  
**Precision Machining**  
**Veterinary Assistant**  
**Web & Computer Programming**  
**Welding**



GET REAL WORLD EXPERIENCE



EXPLORE YOUR CAREER PASSION



CONNECT WITH COLLEGES & CAREERS

**Application Deadline**  
**April 11, 2024**

DIANA JOHNSON  
ADMISSIONS REPRESENTATIVE  
DKJOHNSON@SSDMO.ORG  
314.989.7588

[www.southtechnical.org](http://www.southtechnical.org)



Apply Now

### Real World Skills

- Exploration of what interests you before graduation
- Certifications, college credit, and advanced skills
- Find your passion

### Diverse & Supportive Culture

- Join students from all over St. Louis County
- Shared interests = many friendships
- An environment that welcomes all

### Teachers from Industry

- Experts in the topics they teach
- Knowledge about the industry partners who mentor and hire students
- You choose the pathway from Tech, they help you get there

### When should I apply?

**SOPHOMORES:** Begin applying when applications open on September 5, 2023. Early application is strongly advised. Waitlists are common.

**JUNIORS:** Limited seating for senior year students is sometimes available. Submit an application as soon as you have spoken to your admissions representative about your options.

### What are the prerequisites?

Minimum prerequisites are listed below, but many programs have additional requirements. Check our website for all the specifics!

	At time of application prior to end of first semester	At time of application prior to end of school year	At time of enrollment
TO BE A TECH JUNIOR	Minimum of 3 core (of which .5 must be in Comm Arts)	Minimum of 5 core (of which 1 must be in Comm Arts)	Minimum of 7 core (of which 1.5 must be in Comm Arts)
TO BE A TECH SENIOR	Minimum of 7 core (of which 1.5 must be in Comm Arts)	Minimum of 9.5 core (of which 2 must be in Comm Arts)	Minimum of 11 core (of which 2.5 must be in Comm Arts)

### College & Career Ready 4-year Plan

Freshman	Sophomore	Junior	Senior
<ul style="list-style-type: none"> <li>• English I</li> <li>• Algebra I</li> <li>• Biology</li> <li>• Modern U.S. History</li> <li>• Foreign Language</li> <li>• P.E.</li> <li>• Fine Art</li> </ul>	<ul style="list-style-type: none"> <li>• English II</li> <li>• Geometry</li> <li>• Chemistry</li> <li>• World History</li> <li>• Foreign Language</li> <li>• Health/Personal Finance</li> <li>• Core Elective</li> </ul>	<ul style="list-style-type: none"> <li>• South Tech</li> <li>• South Tech</li> <li>• South Tech</li> <li>• English III</li> <li>• Algebra II</li> <li>• Science Elective</li> <li>• Government</li> </ul>	<ul style="list-style-type: none"> <li>• English IV</li> <li>• Math Elective</li> <li>• Core Elective</li> <li>• Core Elective</li> <li>• South Tech</li> <li>• South Tech</li> <li>• South Tech</li> </ul>
7 CREDITS	7 CREDITS	7 CREDITS	7 CREDITS

**TOTAL = 28 credits: All requirements for graduation and college met!**

Tech fits. You can take all of the required courses for graduation and college entrance and have plenty of room for Tech!

**south  
TECH**  
HIGH SCHOOL

**South Tech**  
**Applications Open**  
**SEPT. 5**

**REAL WORLD  
SKILLS**

**College & Career Options  
for High School Students**

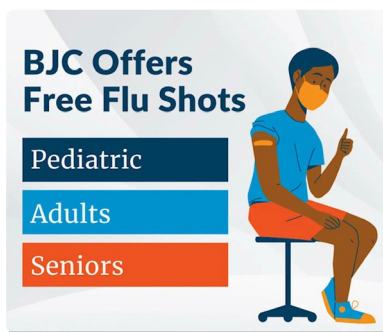
[www.southtechnical.org](http://www.southtechnical.org)

**south  
TECH**  
HIGH SCHOOL





# Health and Wellness



## Free Flu Shots

Receiving a flu shot helps keep you and your community healthy! Free flu vaccinations are being provided through Barnes-Jewish Hospital. For more information or to schedule an appointment [click HERE.](#)

## Mood Boosting Foods

Research shows that certain foods are known to have a positive impact on our mood. While we may first gravitate towards foods that fulfill an immediate need, such as candy for a quick burst of energy or chips to satisfy a salty craving, these foods in the long term do not benefit our overall well being.

Being mindful and present while eating, and not just our food choices, can promote a positive mood and mindset.

Check out the chart to see a range of foods that benefit our physical and mental health.



# SSD FACE Department

## Upcoming FACE Events

The Community Action Agency of St. Louis (CAASTL) will be available at the Family Resource Hub, located inside North County Technical High School on October 6th and November 3rd from 10-2pm. CAASTLC can provide the following programs and services to families:

- Case management
- Utility assistance
- Rental assistance
- Financial education
- Weatherization
- Program development and educational activities



Contact [FACE](#) with any questions.



### FAMILY CAFE

Do you have a strong desire to make connections with other families in your community? Join FACE on October 5th from 6-8pm for a **Family Cafe**. Family Cafes are hosted by families for families. Conversations are centered around the Strengthening Families Five Protective Factors: Resilience, Relationships, Knowledge, Support, and Communication. To learn more or to register, click [here](#).



### Pathways to Independence - Lunch and Learn

FACE is excited to host Pathways to Independence for a Lunch and Learn on October 25th from 11:30-12. Pathways to Independence is a local non-profit supporting teens through navigating their transition years, with a focus on friendship and social skills. Pathways is geared toward more independent teens, often with a Level 1 Autism diagnosis, a learning disability, or other developmental disability. Through a monthly calendar, participants have their choice of a variety of social activities and social skills classes. To access the video, please visit the [SSD YouTube channel](#).



### Family Academy

EXTRA EXTRA READ ALL ABOUT IT! FACE is hosting its second annual **Family Academy** on Saturday, November 4th from 9-12 at North Tech High School, 1700 Derhake Rd., Florissant MO 63033. Families will have the opportunity to meet with a wide variety of community providers and vendors as well as participate in self-directed learning opportunities. So gather up the kids and head to North Tech for a morning filled with fun and empowerment. Visit the FACE [webpage](#) for more information and to register!



## Behavioral Strategies in the Home and Community Series:

Are you often frustrated or at a loss trying to manage your student's behavior? Join SSD's Applied Behavior Analysts on October 9th from 6-7pm to learn basic behavior strategies on how to prevent and react to behaviors when in and out in the community. In this webinar, attendees will review reinforcement strategies, basic functions of behavior, determining what your student prefers, how to apply these things across settings, and where resources are for you in the community. Click [here](#) to register and learn more.

---



# UNITY DAY

## OCT. 18, 2023



<p><b>OCT. 5</b></p> <p>Speaker Tina Meier 11:30 AM - 12:30 PM</p> 	<p><b>Lunch &amp; Learn with the Megan Meier Foundation</b></p> <p>Join Tina Meier, CEO of The Megan Meier Foundation, as she shares about bullying and cyberbullying with families. The mission of the Megan Meier Foundation is to support and inspire actions to end bullying, cyberbullying, and suicide.</p> <p>Learn more at <a href="http://www.ssdmo.org/LunchAndLearn">www.ssdmo.org/LunchAndLearn</a></p> 
<p>Submissions due</p> <p><b>OCT. 13</b></p> <p>Email submissions to <a href="mailto:FACE@ssdmo.org">FACE@ssdmo.org</a></p>	<p><b>"Express Yourself" Contest</b></p> <p>Choose your favorite artistic medium and create an original piece of work that aligns with the theme of "Kindness, Acceptance, and Inclusion." Open to all students who receive services from SSD.</p> <p>For more details, scan the QR code or visit: <a href="http://tinyurl.com/SSDExpressYourselfContest">tinyurl.com/SSDExpressYourselfContest</a></p> 
<p><b>OCT. 18</b></p>	<p><b>UNITY DAY</b></p> <p>Wear orange to show your support!</p>




[www.ssdmo.org/face](http://www.ssdmo.org/face)  
[face@ssdmo.org](mailto:face@ssdmo.org)  
 314.989.8460

## UNITY DAY

**Unity Day** is coming to Special School District. All across the nation, Unity Day is being celebrated on October 18th. Students should wear and share orange to unite for kindness, acceptance, and inclusion to send a visible message that no child should ever experience bullying.

FACE will be holding a **"Unity Day: Express Yourself" contest**.

Students are encouraged to submit entries based on the theme: "Kindness, Acceptance and Inclusion." All forms of artistic expression will be accepted. Check the FACE website for more details on how to enter.



## Unity Day "Express Yourself" Contest

### Unity Day: "Express Yourself" Contest

Welcome to the "Unity Day: Express Yourself" contest, where unity meets creativity! To ensure fairness and a smooth contest experience for all participants, please read and adhere to the following rules.

### Eligibility

Open to all students who receive services from Special School District

## Submission Process

**Submission Deadline:** The deadline for entries is October 13 at the end of the school day.

**Submission Format:** Submissions should be in digital format. Email a picture, video or document to [FACE@ssdmo.org](mailto:FACE@ssdmo.org). Please be sure to include the student's name, age, district, and school.

## Submission Guidelines

**Theme:** Submissions must align with the theme of "Kindness, Acceptance, and Inclusion."

**Artistic Mediums:** Students may choose any artistic medium to express themselves, including but not limited to visual arts (painting, drawing, sculpture, etc.), written word (poetry, prose, essays), music (original compositions or performances), dance, photography, or any other form of creative expression.

**Originality:** All submissions must be original and created specifically for this contest. Plagiarism or copyright infringement will result in disqualification.

**Content Guidelines:** Submissions should promote unity, respect, and inclusivity. Content that is offensive, discriminatory, or harmful will not be accepted.

## Judging Criteria:

**Creativity:** Entries will be judged based on their originality, creativity, and artistic merit.

**Relevance:** Submissions will be evaluated on how well they express the theme "Kindness, Acceptance, Inclusion."

**Impact:** The emotional impact and message conveyed by the entry will also be considered.

## Winners

**Notification:** Winners will be notified on Unity Day, October 18, via the contact information provided during submission. Make sure your contact information is accurate and up-to-date.

**Details:** Winners will be honored at the Board of Education meeting on October 24.

## Rights and Usage:

**Rights:** By submitting an entry, participants grant the contest organizers the right to display, reproduce, and share their work for promotional and non-commercial purposes, with proper attribution to the artist.

**Ownership:** Participants retain full ownership and copyright of their submitted work.



## Student Survey Opportunity

**Students Who Receive Special Education Services Invited to Take SSD Survey:** Special School District values the academic and

personal well-being of our students and prioritizes making data-informed decisions to support their success. In collaboration with Panorama Education, SSD students in grades 3-12 are invited to

share their voices through two surveys, a climate survey and a social-emotional learning (SEL) survey. The surveys will be given during the fall and spring of the 2023-24 school year, with the fall survey window being **Sept. 19 through Oct. 9**. The surveys will be administered electronically, but PDF versions can be previewed on [SSD's website](#).

# Brownies WITH THE BOARD



**When:** Tuesday, Oct. 10, 2023, 5:30 - 6:00 PM

**Where:** SSD Central Office  
12110 Clayton Road, Town & Country, MO 63131

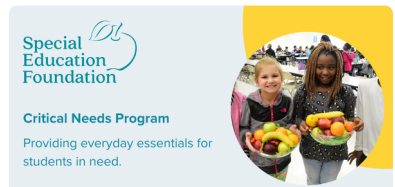
**What:** Members of the Special School District Board of Education will be available to talk with students, staff, families, and community members. This is an opportunity to interact with Board members in an informal setting, ask questions, and provide input. Brownies and light refreshments will be provided.

**OCT. 10  
5:30 PM**



## SEF Critical Needs Program

The Special Education Foundation (SEF) offers Critical Needs services - a solution to provide immediate funding to those students served by the Special School District (SSD) where the family is either unable to financially meet the need, has exhausted community resources, or is at risk for a student medical emergency that may result in the loss of independence or academic failure. Applications (accepted year-round) are to be completed by a social worker, teacher or administrator through the [SEF website](#), submitted to Adrienne Eaglin at [aeaglin@ssdmo.org](mailto:aeaglin@ssdmo.org) or mailed to the Special School District Learning Center at 900 Hornet Drive, Hazelwood, MO 63042.





# Missouri Close the Gap Grant program

This is a one-time grant up to \$1,500 for parents/guardians for education expenses. **Applications are now open and must be submitted by October 25, 2023**

Per state statute, the distribution of funds will be prioritized for families whose income is below 185% of the federal poverty level. If sufficient funds are available after those below 185% of the federal level receive funds, families at or above that poverty level may receive funds.

Allowable educational expenses include:

Instructional resource materials  
Tutoring  
Academic day or summer camps  
Computer equipment  
Internet connectivity  
Before- and afterschool educational programs  
Course fees and textbooks  
Online access for an academic app or subscription  
Education, learning, or study skills services  
Arts-related day or summer camps  
Art enrichment

*Find out more @*

<https://missouri.withodyssey.com/>



## MRH Parent Advisory Council

The MRH Parent Advisory Council offers an opportunity to connect with other parents of students with disabilities and to learn about topics of interest. Please contact MRH parent [Mrs. Kim Gifford](#) if you are interested in participating.

## Let's Talk!

Let's Talk is an open invitation from Special School District (SSD) to tell us what's on your mind. Let's Talk is an easy way to submit feedback at your convenience directly to the SSD staff member who can help.

## Additional Resources

- [SSD Superintendent Updates](#)
- [SSD Parent Advisory Council](#)

- [SSD Partner District - Maplewood-Richmond Heights](#)
- [Academic and Related Services Toolkit](#)

**Click Here to read "Honoring Our History, Shaping Our Future" MRH Strategic Plan**



**Emily Kresyman**

Director of Special Education

**Contact Emily**



[erkresyman@ssdmo.org](mailto:erkresyman@ssdmo.org) | 314.989.8100